

# Voice Remote User Guide

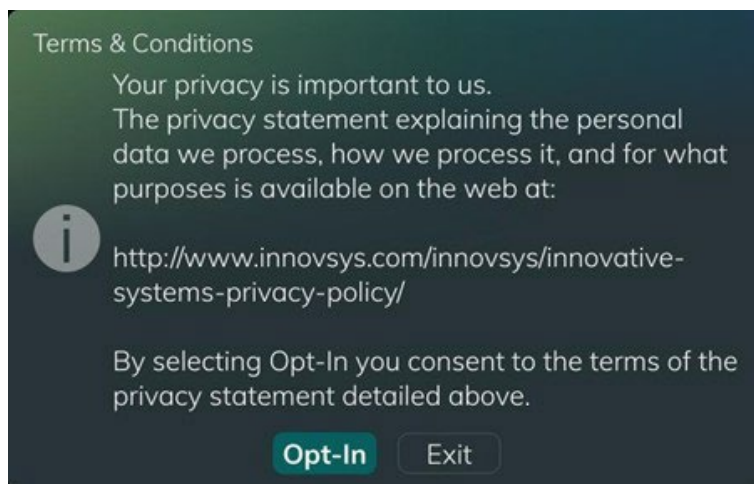
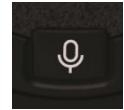


The information presented in this document is written for the default settings of the system. The *Voice Remote User Guide* may be reformatted to fit your company needs.

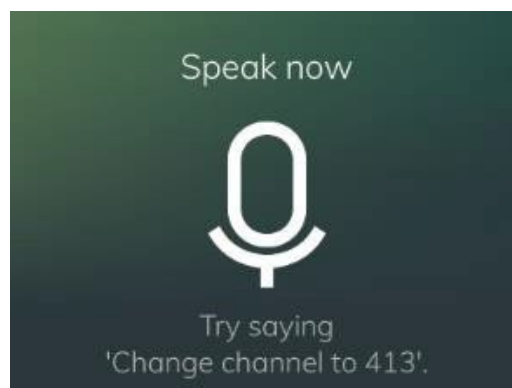
This guide is a working document. The information and screen captures represented in this document may change frequently and without notice.

## Voice Remote User Guide

1. Verify the remote control is correctly paired with the STB. (If not, see REMOTE PAIRING section below).
2. The voice features are accessed by pressing the microphone button on the remote control. The first time you attempt to use the voice feature on a STB, the Terms and Conditions window will appear. If you choose Exit, the dialogue window will close, and you will be shown the Terms and Conditions the next time the microphone button is pressed. If you choose Opt-in, you will now be able to use the voice features.



3. **Press and hold** the microphone button on the remote. The “Speak Now” dialogue window will appear with voice command recommendations.



4. The following types of voice commands work:

Channel Change:

- Watch <channel number>
- Change channel to <channel number>
- Tune to <channel number>
- Last Channel
- Previous Channel

Search:

- Find <program name>
- Search for <program name>

Application Launching:

Say “Open” or “Show” following by one of the following:

- Guide
- Recordings
- On Demand
- Movies
- Now Playing
- Weather
- Forecast
- Radar
- Info

Playback Control:

- Pause
- Play
- Fast Forward
- Rewind
- Skip Ahead
- Skip Back
- Stop
- Stop Playback
- Start Over
- Restart
- Live
- Go to Live

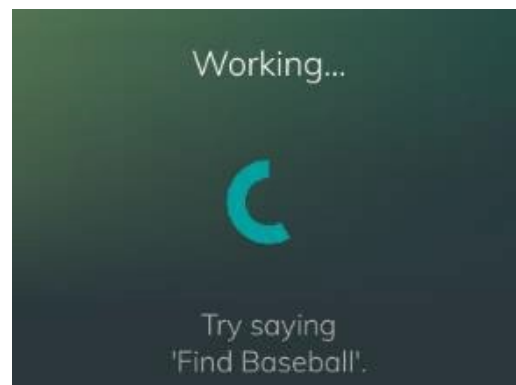
Guide Control:

- Record
- Next Day
- Previous Day

General:

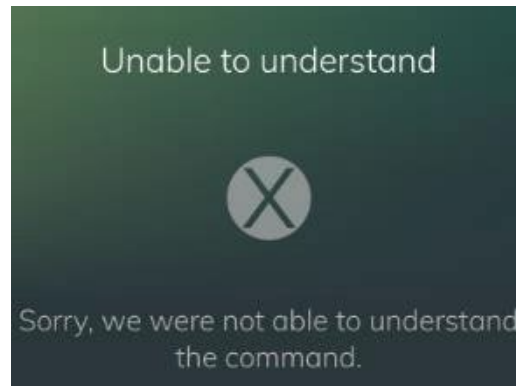
- Ok
- Exit
- Record
- Closed Captions On
- Closed Captions Off

5. After a command has been spoken and the microphone button is released, the dialogue “Working” with a spinning wheel will appear briefly. The results of the command (e.g. channel change, search results, etc.) should appear.

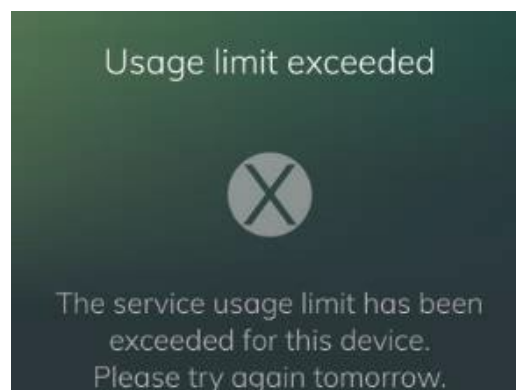


**Note:**

- The command cannot exceed 10 seconds.
- If the command is not understood, the following message will appear:



- If the daily device limit or the daily service limit has been reached and a command is sent, the following message will appear:



## Remote Pairing

The remote will automatically pair to any nearby unpaired STB that supports RF remotes.

1. Install batteries in the remote.
2. Move to about 4-5 feet from the STB.
3. Point the remote at the STB and press OK.
4. The Pairing Remote Control window will appear.

